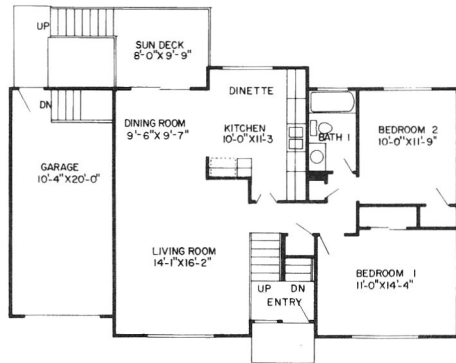


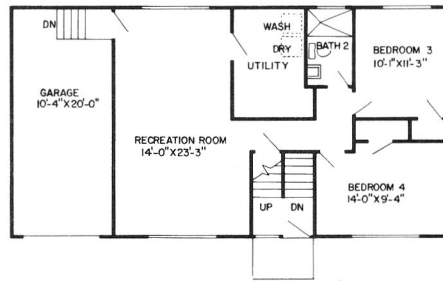
ALL PLANS & ELEVATIONS COPYRIGHT 1971 BY W. H. FRANCIS

the Alpine

Price includes house,
site & all items listed:



UPPER LEVEL



LOWER LEVEL

- 4 Bedrooms
 - 2 Baths
 - Dining room
 - Kitchen dining space
 - Foyer
 - Center hall plan
 - Huge family room
 - Patio balcony
 - Garage
 - Range & oven
 - Decorative glass entry
 - Patio doors
 - Large utility room
 - Carpet *
- *except in linoleum or tiled areas.

This enchanting bi-level home welcomes you to gracious Western living. From the large entry area is a view of the open staircase with its modern wrought iron and wood railing providing an easy access to either upper or lower levels. The upper level has two bedrooms, a large living room with big picture window, located away from daily wear and tear. Adjacent to the living room is a spacious dining room with patio doors opening to a delightful balcony. The kitchen provides a woman's dream in cabinets and eating area. Four bedrooms, with two up and two down, provide privacy for mom, dad, and children alike, with a bath for privacy on each level. The huge family room which promises relaxed Western living in the lower level has large picture windows to enhance your relaxation and fun. Shower is "man-sized". A utility and storage area is located on the lower level. The one-car garage has a back door leading conveniently to the back yard and another into the home. Melody Homes has outdone themselves on this model. A truly great home value.



"EQUAL HOUSING OPPORTUNITIES"



888R