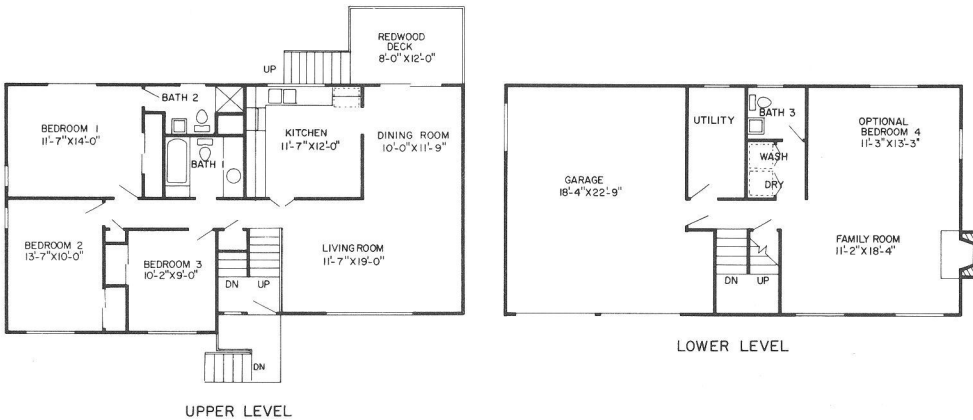


ALL PLANS & ELEVATIONS COPYRIGHT 1971 BY W. H. FRANCIS

the Camden III

Price includes house,
site & all items listed:

- 3 Bedrooms
(opt. 4th bedrm. available)
 - 2½ Baths
 - Big dining room
 - Kitchen dining space
 - Foyer
 - Center hall plan
 - Paneled family room
 - Covered front porch
 - Patio balcony
 - 2 Car garage
 - Range & oven
 - Decorative glass entry
 - Patio doors
 - Utility room
 - Carpet *
- *except in linoleum or tiled areas.*



The rustic or Spanish touch lends character to the lovely design of this split foyer home. A covered porch offers a friendly greeting to family or guests alike, while the center hall keeps rooms free of the hustle and bustle of daily traffic. Elegant, formal dining is encouraged by the dining room which has sliding glass doors leading to its balcony-patio. The dream kitchen has a large expanse of counter top, soffits dropped over the beautiful cabinetry and space in which to provide large family kitchen dining in carefree style. A private bath adjoins the master bedroom. The main bath has a built in vanity and both upper level baths use modern ceramic tile in the tub and shower area. The paneled family room has an optional fireplace available. Space for laundry equipment is plumbed and wired in the utility room. This spacious 4 bedroom, 2 1/2 bath home with its two car garage and other features readily handles a large family with fun filled, carefree comfort and privacy.



"EQUAL HOUSING OPPORTUNITIES"

